

Public Footpath 91 Haxey
Definitive Map Modification Order 2000

The County of Lincoln – Parts of Lindsey
Definitive Map and Statement

North Lincolnshire Council

Wildlife and Countryside Act 1981

County of Lincoln – Parts of Lindsey (Isle of Axholme) Definitive Map and Statement Public Footpath 91, Haxey

This order is made by North Lincolnshire Council under section 53(2)(b) of the Wildlife and Countryside Act 1981 ("the Act") because it appears to the authority that the County of Lincoln – Parts of Lindsey (Isle of Axholme) Definitive Map and Statement require modification in consequence of the occurrence of an event specified in section 53(3)(a)(i), namely, a highway shown or required to be shown in the map and statement has been authorised to be diverted, of the Act.

The authority have consulted with every local authority whose area includes the land to which the order relates. The North Lincolnshire Council hereby order that:

1. For the purposes of this order the relevant date is 28th. April 2000.
2. The County of Lincoln – Parts of Lindsey (Isle of Axholme) Definitive Map and Statement shall be modified as described in Part 1 and Part 2 of the Schedule and shown on the map attached to the order.
3. This order shall take effect on the date it is made and may be cited as the "Public Footpath 91, Haxey, Definitive Map Modification Order 2000".

SCHEDULE

PART 1

Modification of Definitive Map

Description of path to be deleted

That part of Public Footpath 91 in the Parish of Haxey within the district and county of North Lincolnshire, having a length of approximately 630 metres and running from Point A in a generally northerly direction to Point H on the map.

Description of path to be added

A footpath having a minimum width of 1.5 metres and a total length of approximately 860 metres running in a generally northerly direction from Point A for 120 metres to Point B, then generally west for 20 metres to Point C, then generally north east for 200 metres to Point D, then south east for 75 metres to Point E, then north east for 175 metres to Point G, then 270 metres to Point H on the map.

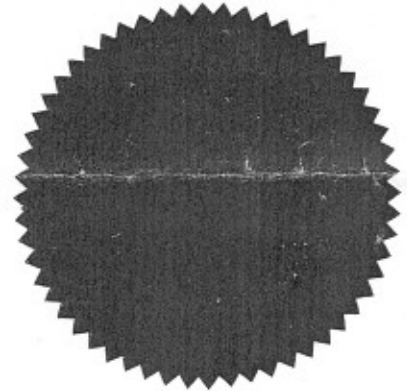
PART 2

Modification of Definitive Statement
Variation of particulars of path

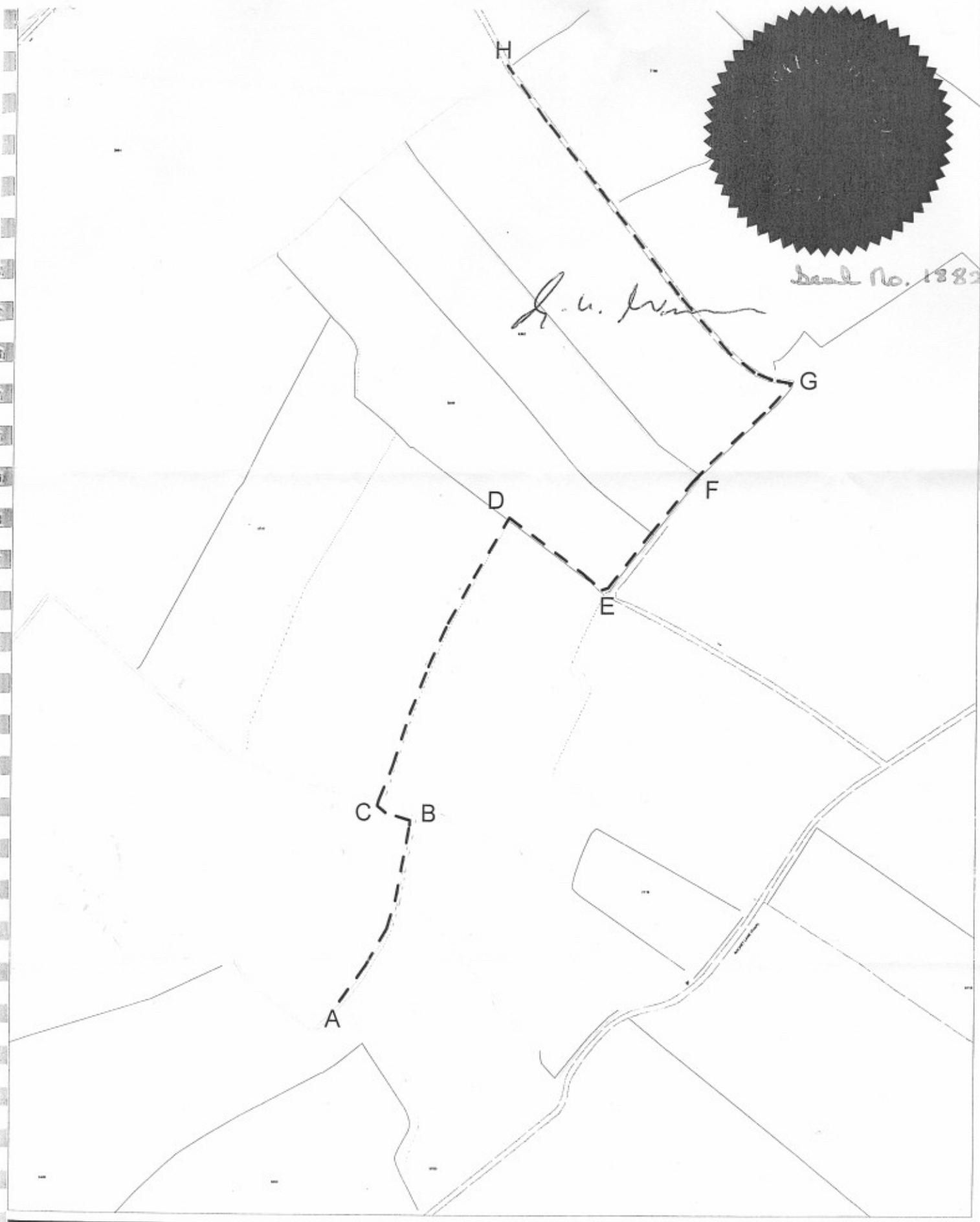
From the northern end of the approximately 5-metre-long footbridge at grid reference SE76520113 (Point A), the path heads generally northwards along the eastern edge of a field for approximately 120 metres to grid reference SE76560123 (Point B), then turns west along the edge of the same field for approximately 24 metres to grid reference SE76540124 (Point C); then turns northwards over the culverted field entrance into another field to follow the eastern edge of that field for approximately 190 metres to cross the northern perimeter of that field into a further field at grid reference SE76620142 (Point D); then heads south east along the southern edge of that field for approximately 75 metres to grid reference SE76680137 (Point E), then heads north east along the eastern edge of that field, and a further field, for approximately 90 metres to the approximately 4-metre-long footbridge at grid reference SE76730145 (Point F); then across the footbridge into a further field to continue along the eastern edge of that field for approximately 80 metres to join a track at grid reference SE76790150 (Point G); whereupon the path heads north west along said track for approximately 160 metres to grid reference SE76610169 (Point H), this being the point at which with Public Footpath No. 91 along it makes a right-angled turn to the north east.

THE COMMON SEAL of)
NORTH LINCOLNSHIRE COUNCIL)
Was hereunto affixed on the)
in the)
presence of:)

[Handwritten signature]



Seal No. 1382



DIRECTORATE OF ENVIRONMENT
AND PUBLIC PROTECTION
CHURCH SQUARE HOUSE, SCUNTHORPE
THIS MATERIAL IS BASED ON ORDNANCE SURVEY DIGITAL DATA USED
WITH THE PERMISSION OF THE CONTROLLER OF HER MAJESTY'S STATIONERY OFFICE
NORTH LINCOLNSHIRE COUNCIL 2000

C. CROWN COPYRIGHT RESERVED : LICENCE NO. LA09062L

Title: Haxey FP91

Scale: 1:3,000

